

DURA-TUFF ALL PLASTIC FARROWING FLOOR

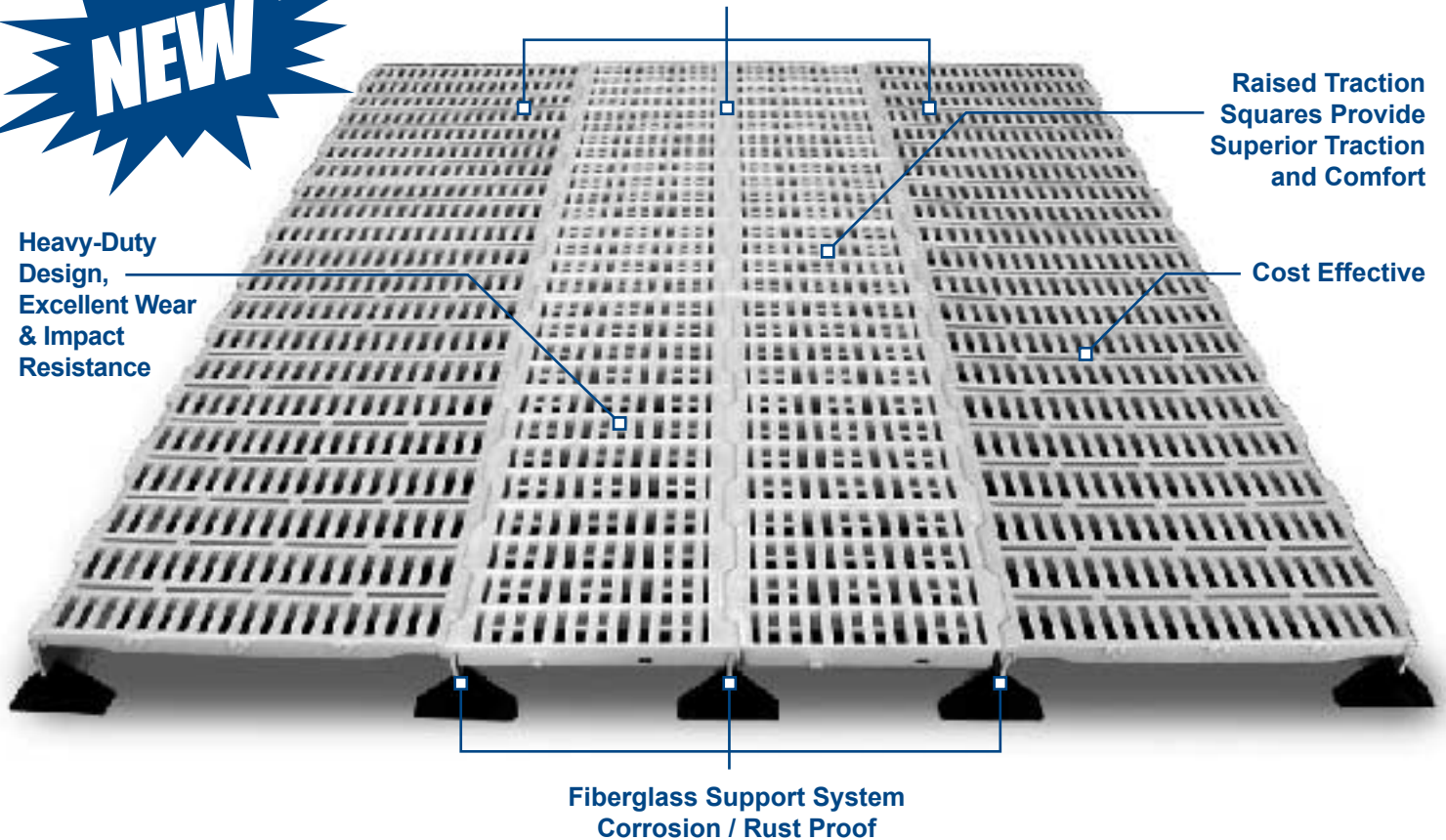


Interlocks with Dura-Tuff Nursery / Creep Area Floor

Raised Traction Squares Provide Superior Traction and Comfort

Heavy-Duty Design, Excellent Wear & Impact Resistance

Cost Effective



Fiberglass Support System
Corrosion / Rust Proof

TRACTION:

- Raised traction squares aid sows in getting up and down while providing a comfortable laying surface.

DURABILITY:

- Heavy-Duty construction made out of high-grade virgin polypropylene material. This makes Dura-Tuff's wear and impact resistance superior to other plastic farrowing floors.

SUPPORT SYSTEM:

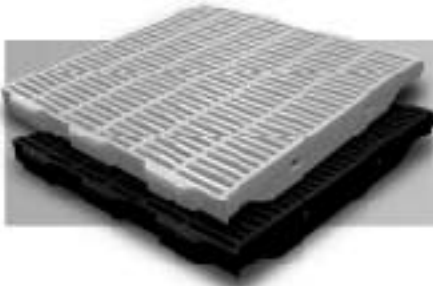
- Twelve-inch support beam spacing under the sow for maximum durability. The superior fiberglass support system clear spans up to 8 feet. The fiberglass beam is corrosion/rust proof and priced to compete with steel supports. Dura-Tuff farrowing floor system will work with steel beams. The steel beams must be hot dip galvanized or stainless.

PRICE:

- Dura-Tuff plastic sow floor interlocks with our nursery/creep floor to provide the most economical farrowing floor on the market.



DURA-TUFF® FLOORING SYSTEM COMPONENTS



◀ DURA-TUFF PLASTIC CREEP & NURSERY FLOOR

- SIZE: 24" x 24" (610mm x 610mm) STOCK COLORS: Black or
- SIZE: 24" x 18" (610mm x 458mm) White (Special colors
- SIZE: 18" x 24" (458mm x 610mm) available by quote)
- SIZE: 18" x 18" (458mm x 458mm)

▶ PLASTIC BEAM MOUNTING PLATES

Used wherever beam comes in contact with concrete.
Used to protect and stabilize the fiberglass beams.



◀ DURA-TUFF PLASTIC SOW FLOOR

- SIZE: 12" x 12" (305mm x 305mm)
- STOCK COLORS: Black or White
(Special colors available by quote)

▶ DURA-TUFF FIBERGLASS SUPPORT BEAMS

- 1/4" x 5" (7mm x 127mm)
- 1/4" x 3" (7mm x 76.2mm)
- 1/4" x 1-1/2" (7mm x 38.1mm)

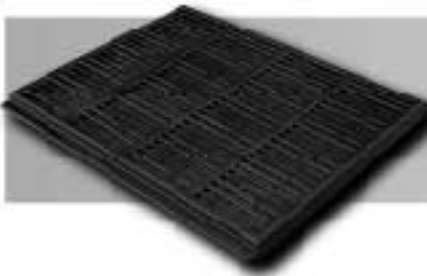
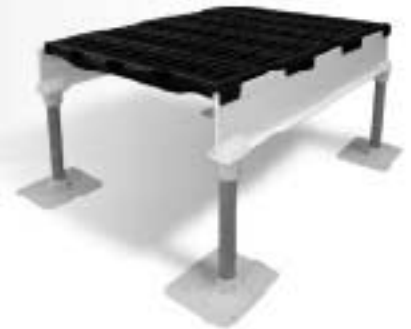


◀ DURA-TUFF RAISED & FLAT INTERLOCKING CAST IRON SOW FLOOR

- SIZES: 24" x 24" (610mm x 610mm) Raised Or Flat
- 24" x 18" (610mm x 458mm) Raised Or Flat

▶ DURA-TUFF LEG SUPPORT SYSTEM

Used for additional support with our fiberglass beam
when clear span exceeds more than 10 feet.



◀ DURA-TUFF RAISED & FLAT OVERLAPPING CAST IRON SOW FLOOR

- SIZES: 24" x 28" (610mm x 711mm) Raised Or Flat
- 24" x 34" (610mm x 864mm) Raised Or Flat
- 24" x 42" (610mm x 1067mm) Flat Only

▶ ASSORTED MOUNTING ACCESSORIES

Dura-Lock Anchoring System, J-Bolts, Locking Nuts,
Bolts, Washers and Stabilizer Bars

